

Thank **you** for your supporting of **Ferei** Professional LED product.

It's our **honour** to be at your service

## Features

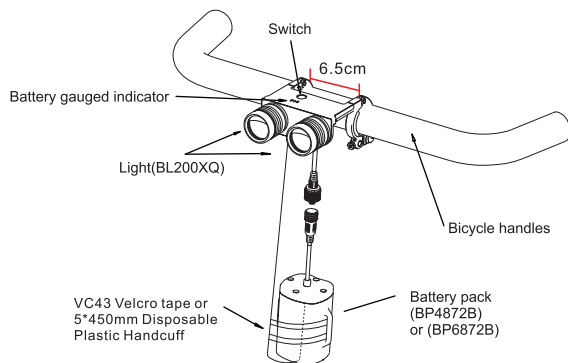
- The BL200XQ features a unique thermostatic circuit to regulate temperature and prevent overheating.
- Unique, compact twin-head design uses the very latest Cree XM-L2 LEDs for unmatched output.
- Toughened ultra clear glass lens provides maximum light transmittance.
- Computer-designed alloy reflector provides a seamless beam with optimal focus.
- Aerospace grade aluminum body resists impacts and effectively dissipates heat.
- Surface is anodic oxidation finished.
- Water-resistant O-ring sealed construction guards against inclement weather.
- Equipped with three indicator lights to indicate the level of charge.
- Optional BP6872B battery pack is available, which makes the runtime to be last 3.5-7 hours(at max output)
- Multi-purpose DC cable conveniently attaches to the battery pack and power supply/charger.
- The BL200XQ features a convenient integrated handlebar mount while the battery pack can be conveniently fitted by using the optional VC43 Velcro strap or 5\*450mm Disposable Plastic Handcuff.
- Patent moon shape reflector: Arched part reflects the beam right ahead to reach a further distance; Crescent part prevents the beam reflecting upwards so to avoid disturbing vehicles across, and also spreads the nearby beam to get a wider range.

## Specifications

Type	BL200XQ												
LED	CREE XM-L2 (Cool White)												
ANSI/FSC	MAX	USER-DEFIND								police strobe	slow strobe	fast strobe	SOS
Light PER	100%	10%	20%	30%	40%	50%	60%	70%	80%	USER-DEFIND			
Output(LM)	1720	172	344	516	688	860	1032	1204	1376	USER-DEFIND			
Runtime (indoor static testing at 28°C at max output)	3.5 hours												
Range	270 meters												
Maximum intensity	42000CD												
Waterproof grade	IPX4												
Anti-drop	1M												
Dimension	75.2mm X 86mm X 34mm(LxWxH, Without Bracket)												
Battery	BP4872B lithium-ion battery pack												
Weight	225g(Excluding battery)												
Battery	BP6872B lithium-ion battery pack(optional)												
Runtime (indoor static testing at 28°C at max output)	7 hours												

## Diagram

\* Photos are for reference only, products in kind prevail!



## Usage instructions

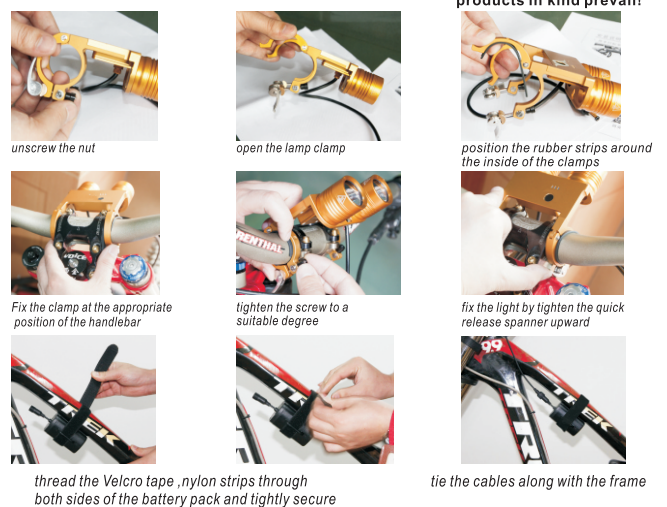
Prior to using the BL200XQ for the first time the battery pack must be fully charged. While charging, the LED indicator light on the AC power adaptor will illuminate red. Once the battery is fully charged the LED indicator will change to green. The battery pack can take up to 6 hours to reach 100% charge if fully depleted. Alternatively the battery may be charged for 2 hours for an 80% charge or 3 hours for a 90% charge. While the battery pack can be used in any state of charge above the 5.8v cut-off, when not used for extended periods it should be charged for 4 hours every 3 months. After each 3 monthly charge, it is also recommended that the light be used on high for 10-20 minutes to condition the battery pack before storing.

The BL200XQ is equipped with three indicator lights which blinks in accordance with the battery pack's state of charge as described below:  
Over 80% charge: 3 indicator lights on  
50% - 80% charge: 2 indicator lights on  
20% - 50% charge: 1 indicator light on  
below 20% charge: 1 indicator light on and continuous blinking without pause  
When the battery pack's voltage reduce to 5.8v the protection circuit will activate and turn the unit off automatically. When this occurs the unit should be recharged. Be sure to always recharge the battery pack in a safe place and do not leave unattended while charging.

- To turn the unit on, briefly depress the small glass switch on the face of the top panel. The default setting is high mode (1720 lumens).
- To access user-defined mode, simply press the switch in high mode.
- To adjust user-defined mode, with the light turned on, hold the power button down for 2 seconds and release. The light will blink rapidly to indicate user-defined mode has been accessed and then begin ramping up and down in brightness. When a desired brightness is displayed press the button once again to memorize this setting in user-defined mode.
- The BL200XQ has a hidden strobe mode with 4 selectable strobe patterns. To access the strobe mode simply hold down the power button for 2 seconds with the unit turned off and release. To cycle to the next strobe pattern once again hold for 2 seconds and release. To exit strobe mode press the button once.  
**Note:** The BL200XQ's brightness mode are as follows:  
Turn on/max → User-defined mode → Off → Strobe 1, 2, 3, 4 → Off

## Installation Instructions

\* Photos are for reference only, products in kind prevail!



## Intelligent Temperature Control Instructions

The flashlight is designed with the Intelligent temperature control system. As we know, LED is a component which can make heat and is sensitive to the temperature, it will be damaged or its working life will be shorten by the overheat temperature, especially the powerful and brightness LED. So the Intelligent temperature control system works when the flashlight's designation and structure cannot realize the heat-radiation temperature from the high brightness LED lighting. The system controls the temperature of the LED lamp wick, obviously, the flashlight gets different Thermal Conductivity with different structure, and generally speaking, the surface temperature of the flashlight constant between 50°C to 60°C, when the flashlight runs heat, the Intelligent temperature control function will help to reduce the power to cool down the lamp wick, the brightness of the light will corresponding fell and get lower. And in comparison outdoor using with the indoor using, outdoor area using will get wind to cool it down and heat-radiation is better, the LED will crank up the power and the lights become brighter, and the process of ascension brightness will smooth and slow without flashes.

At the same time, the intelligent temperature control system will lead the run time get longer (may be the standard of twice to five times). Particularly, the run time will depend on the temperature, running speed even the wind strength, so the actually run time will be a little different according to the environment of the flashlight using.

## Maintenance

- Periodically clean the glass lens of dust and debris to ensure maximum brightness. Use a soft clean cloth or an eyeglass cleaner if possible to avoid scratching the glass.
- Keep water, dirt, sand and debris out of the cable connections and light body.
- Unplug the battery pack from the light when not in use to help extend battery life.
- When riding in damp weather dry off the light and battery immediately after use.

## Warnings

- Do not shine the bicycle light directly into anyone's eyes.
- Aim the beam down when riding on the road to avoid blinding oncoming vehicles.
- The lens and front area of the light can get hot while in use. Avoid touching these areas.
- Do not dismantle the light or the battery pack, this will break the waterproof seal and void warranty.
- The BL200XQ's power source is a 7.4v lithium-ion battery pack coupled with a protection circuit board. Should the battery pack ever fail to charge or cease normal operation be sure to contact your local Ferei dealer and under no circumstances attempt self-repair.
- Ferei reserves the right of interpretation of this manual.

☆☆☆ patented product, counterfeiting not allowed ☆☆☆

## Shenzhen FEREI Lighting Co., Ltd

Address: 3rd Industrial Zone, Xiakeng Village, Tongle, Longgang District, Shenzhen 518116 China  
TEL: 0086 755 8480 7942 / 0086 755 8480 7943  
FAX: 0086 755 8480 7944 E-mail: ferei@ferei.com  
Web: <http://www.ferei.com>