

Thank you for your supporting of Ferei Professional LED product.

It's our honour to be at your service

Features

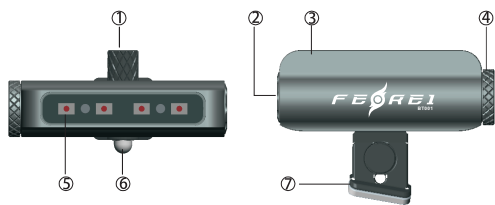
1. High-power Osram LED with a lifespan of up to 100,000 hours.
2. Toughened glass with double diamond film and anti-reflection film coating shield provides maximum light transmittance.
3. Aviation aluminum with CNC precision machining resists abrasion and shock.
4. Exquisite and beautiful with small size and compact structure.
5. Surface is anodic oxidation finished.
6. Designed with toughened glass switch, beautiful and also convenient to operate.
7. Easy operation with quick lock design for assembly and disassembly.
8. Brightness mode: flashing-constant on-off; 180 degree warning area.
9. Ultra-low power consumption; IPX6 waterproof design.

Specifications

Type	BT001
Runtime (indoor static testing at 28°C at flashing mode)	over 4 hours
Waterproof grade	IPX6
Anti-drop	1 meter
Battery	1*AAA Battery
Dimension	56.5mm*38.2mm*26.5mm
Weight	23.4g(Excluding battery)

Diagram

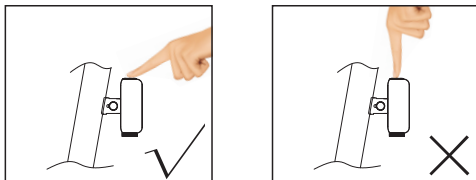
* Photos are for reference only, products in kind prevail!



①Screw Rod ②Switch ③ BT001 Tail Light ④Tail Cap ⑤LED ⑥M3 Cap Nut ⑦Bracket

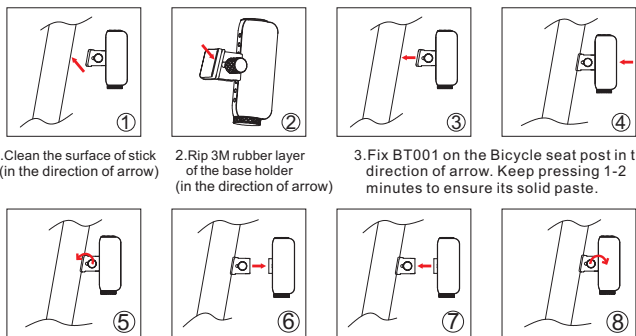
Usage instructions

1. Insert 1pc AAA battery into the body at the right direction.
2. Press the switch to activate the light, in sequence it is: flashing-constant on-off.



Assemble and Disassemble

* Photos are for reference only, products in kind prevail!



1. Clean the surface of stick (in the direction of arrow)
2. Rip 3M rubber layer of the base holder (in the direction of arrow)
3. Fix BT001 on the Bicycle seat post in the direction of arrow. Keep pressing 1-2 minutes to ensure its solid paste.

4. Remove the tail light: Loosen the screw rod in the direction of arrow (as shown in Figure ⑤). Remove the tail light from bracket base (as shown in Figure ⑥).
5. Fix the tail light: Put the tail light into the bracket base (as shown in Figure ⑦). Tighten the screw rod in the direction of arrow (as shown in Figure ⑧).

Maintenance

1. Periodically clean the glass lens of dust and debris to ensure maximum brightness. Use a soft clean cloth or an eyeglass cleaner if possible to avoid scratching the glass.
2. Remove the battery from the light when not in use to help extend battery life.
3. When riding in damp weather dry off the light and battery immediately after use.

Warnings

- It is a lighting tool, not a toy. Keep it away from children.
- The surface of the flashlight may become hot during extended use.
- Do not dismantle or disassemble any structural parts of the light, especially the seal parts.
- Dry the light surface with soft cloth immediately after exposure to water or any corrosive substance.
- Always remove batteries during long periods of inactivity (more than 30 days).
- Ferei reserves the right of interpretation of this manual.

Warranty Conditions and Instructions

Dear customer:

Thank you for choosing Ferei for your personal lighting needs. So we may serve you better, please carefully read the following warranty conditions pertaining to your purchase.

1. This warranty card must be authenticated by either Ferei or an authorised Ferei distributor / dealer.
2. Any Ferei product that malfunctions or ceases to operate within 14 days of purchase under normal usage conditions may be returned to any one of its authorised distributor / dealer or Ferei for an exchange of the same or equivalent product.
3. All Ferei flashlights, bicycle lights, diving lights and headlamps are warranted against manufacturing defects and / or malfunction for a period of 2 years from the date of purchase.
4. The warranty period for perishables and accessories (glass lenses, O-rings, rubber switches, batteries etc.) is 8 months from the date of purchase and the warranty period for Ferei AC adaptors or chargers is 12 months.
5. Should any warranty concerns arise be sure to contact either the Ferei service centre directly, or your local distributor / retailer. Under no circumstances attempt self-repair.
6. Should any Ferei product become defective outside of the warranty period, customers may still have their products repaired at a mutually agreed cost.
7. Ferei's warranty policy is rendered null and void by the following conditions:
 - a. The 14 day replacement or 2 year repair period has expired.
 - b. The product is deemed to have malfunctioned as a result of misuse.
 - c. The product is deemed to have malfunctioned as a result of unauthorised modification or disassembly.
 - d. The product is deemed to have malfunctioned due to incorrect maintenance and / or storage.
 - e. A valid sales receipt, invoice or warranty is not presented.
 - f. The product is counterfeit.
 - g. The product ceases to operate due to damage caused by impacts and / or dropping.

Data of products

Name:	
Model:	
Serial number:	Brand:

Document of customer

Name of customer:	
Address:	
Telephone number:	Zip code:

Sales number

Name of distributor:	Telephone number:
Address:	Zip code:
Sale date:	Sale:
Invoice number:	

The record of service

Send date:	Return date:
Reason for malfunction:	
Outcome:	
Service:	Repairman:
Send date:	Return date:
Reason for malfunction:	
Outcome:	
Service:	Repairman:

☆☆☆ patented product, counterfeiting not allowed ☆☆☆

Shenzhen FEREI Lighting Co., Ltd

Address: 3rd Industrial Zone, Xiakeng Village, Tongle, Longgang District, Shenzhen 518116 China
 TEL: 0086 755 8480 7942 / 0086 755 8480 7943
 FAX: 0086 755 8480 7944 E-mail: ferei@ferei.com
 Web: http://www.ferei.com